

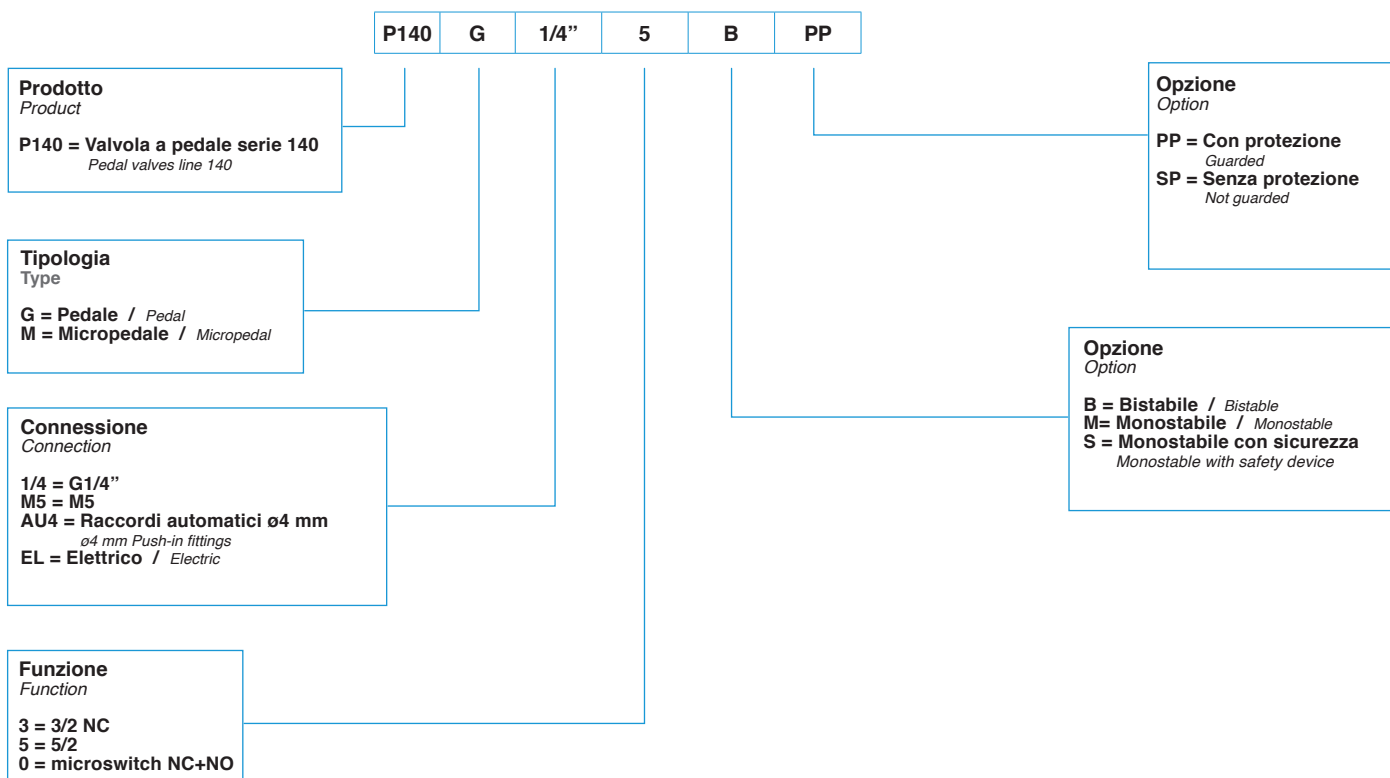
Dati tecnici dei pedali pneumatici / Pneumatic pedal valves technical data

Referenza / Reference	P140 MAU4 __	P140 GAU4 __	P140 G1/4 __
Connessione / Connection Type	φ4 – M5	φ4	G1/4"
Diametro nominale Effective orifice	2 mm	2 mm	5 mm
Pressione d'esercizio Working pressure	2:10 bar (0,20:1,0 MPa)	2:10 bar (0,20:1,0 MPa)	2:10 bar (0,20:1,0 MPa)
Range di temperatura Temperature range	-10:50°C (14:122°F)	-10:50°C (14:122°F)	-10:50°C (14:122°F)
Costruzione / Construction	Valvola ad otturatore / poppet valve	Valvola ad otturatore / poppet valve	Valvola a spola / spool valve
Portata di riferimento (P=6 bar – p=1 bar) Reference flow rate (P=6 bar – p=1 bar)	75 NI/min	75 NI/min	550 NI/min
Fluido / Fluid	Aria filtrata con o senza lubrificazione / Filtered air with or without lubrication		
Materiali / Materials	POM, NBR, ottone, acciaio INOX, alluminio nichelato / POM, NBR, brass, stainless steel, nickel plated aluminium		

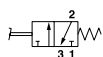
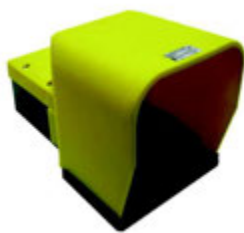
Dati tecnici dei pedali elettrici / Electric pedal valves technical data

Referenza / Reference	P140 G EL O M PP	P140 G EL O S PP
Tipo / Type	monostabile / monostable	monostabile con sicurezza / monostable with safety system
Costruzione / Construction	Microswitch singolo NC+NO / Single microswitch NC+NO	
Range di temperatura / Temperature range	-25:70°C (-13:158°F)	

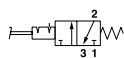
Guida alle referenze / Guide to reference



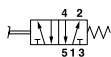
Valvole a pedale con protezione, 5/2 G1/4" – 3/2 φ4 / 5/2 G1/4" – 3/2 φ4, Guarded pedal valves



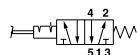
BV1407493001	P140 G AU4 3 M PP	
BV1407493002	P140 G AU4 3 S PP	



BV1407493003	P140 G AU4 3 B PP	
--------------	-------------------	--

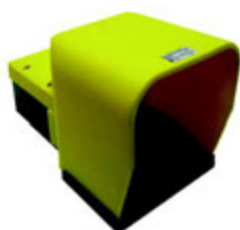


BV1407535001	P140 G 1/4 5 M PP	
BV1407535002	P140 G 1/4 5 S PP	



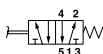
BV1407535003	P140 G 1/4 5 B PP	
--------------	-------------------	--

Pedale elettrico protetto / Guarded electric pedal valve

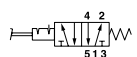


BV1407660801	P140 G EL O M PP	
BV1407660802	P140 G EL O S PP	

Valvole a pedale senza protezione, 5/2 G1/4" / 5/2 G1/4", not guarded pedal valves

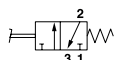


BV1407535004	P140 G 1/4 5 M SP	
--------------	-------------------	--



BV1407535005	P140 G 1/4 5 B SP	
--------------	-------------------	--

Micropedale 3/2 φ4 – M5 / 3/2 φ4 – M5, micropedal valve



BV1406493001	P140 M AU4 3 M SP	
BV1406413001	P140 M M5 3 M SP	